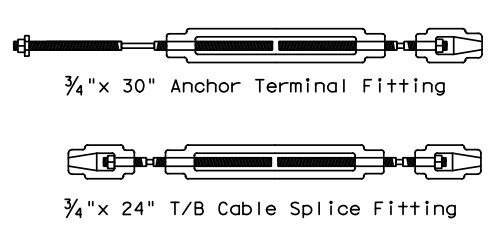
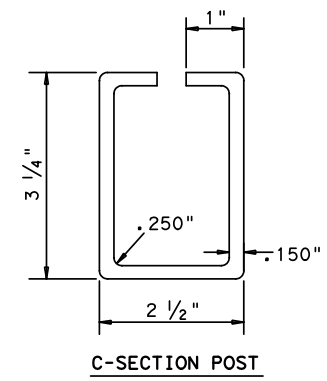


For Use On Concrete  
5/8" Mechanical Anchor  
Min. Pullout Strength 10,000 lbs.

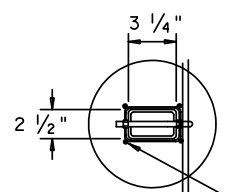
BASE-PLATED POST



TURNBUCKLES

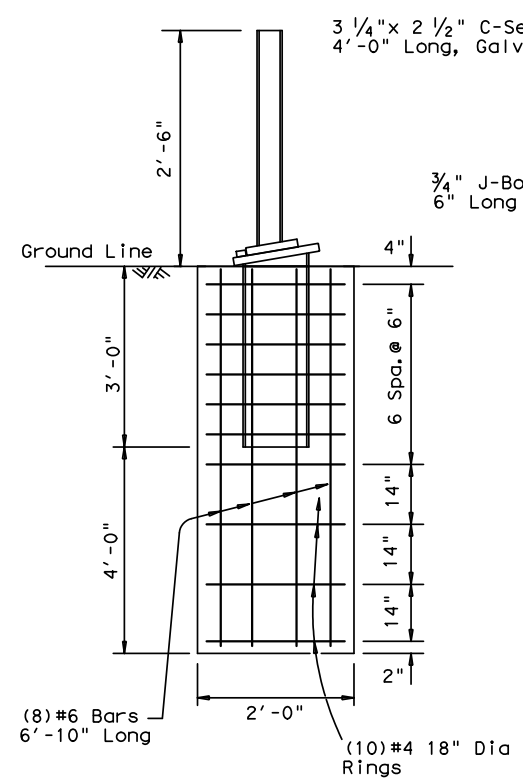


C-SECTION POST

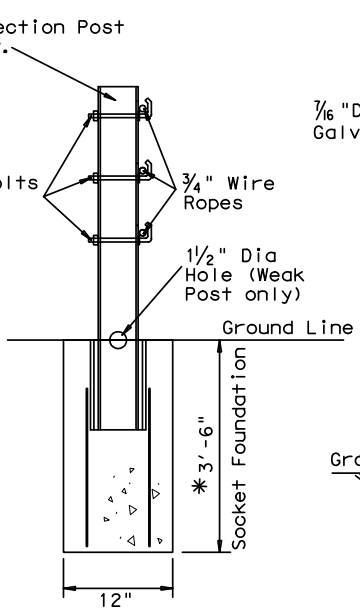


(4) #4 Bars x 2'-8" Lg  
or (4) #4 1'-8" Lg Bars  
welded to socket (Same  
at Terminal Post)

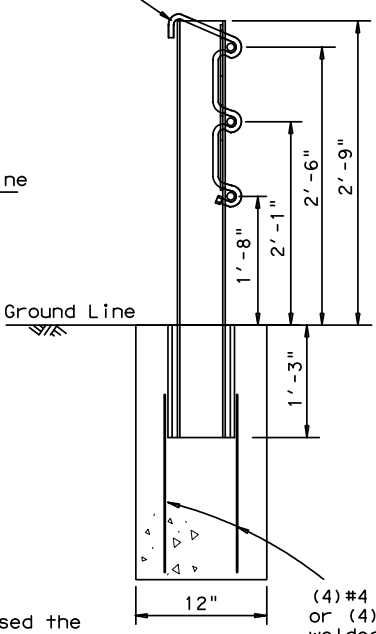
1/16" Dia x 24" Long Hairpin,  
Galvanized



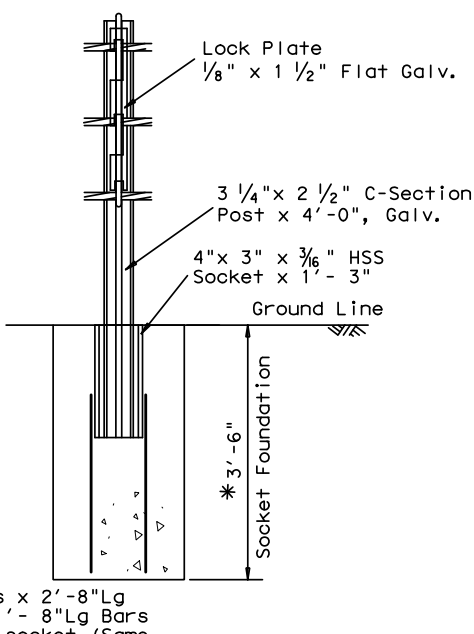
(1) CABLE RELEASE ANCHOR POST



(2) WEAK TERMINAL POST



SOCKETED LINE POST OPTION  
(TYPE S POST)



DRIVEN LINE POST OPTION  
(TYPE D POST)

GENERAL NOTES

- For additional information, contact Gibraltar, Inc. at 1-800-495-8957.
- All concrete shall be class A.
- All posts shall be socketed unless otherwise specified.
- For additional information: See the manufacturer's product manual.
- For payment see special specification "Cable Barrier System".
- The GCBS system is designed for bi-directional traffic flows. See the manufacturer's product manual for placement adjacent to guardrail end treatments.
- GCBS shall be installed on median shoulders or in depressed medians with slopes of 6:1 or flatter without obstructions, depressions, etc. that may significantly affect the stability of an errant vehicle.
- GCBS may be installed on either side of the median.
- See the Texas MUTCD for proper "Barrier" delineation.
- Rock Clause: Where solid rock is encountered.
  - For socketed post, continue digging 12" dia., 15" deep into rock or the required plan depth, whichever comes first.
  - For driven post, core drill a 4" dia. hole 18" deep into rock or the required plan depth, whichever comes first.
  - For anchor post, continue digging 24" dia. hole 30" deep into rock or the required plan depth, whichever comes first.
- For Anchor post, if poor soil conditions exist (i.e. "sugar" sand or expansive clay) continue the 7 ft. deep shaft an additional 2 feet. (See the manufacturer's installation manual)
- All components shall be galvanized.

F	Std. Cable
-10	8000
0	7600
10	7200
20	6800
30	6400
40	6000
50	5600
60	5200
70	4800
80	4400
90	4000
100	3600
110	3200

Allowable Deviation from Chart: ± 10%

LEVELS DISPLAYED

P. E. SEAL  
REQUIRED  
**PRELIMINARY**  
SUBJECT TO REVISION

GIBRALTAR  
(TL-3) CABLE  
BARRIER SYSTEM  
(Gibraltar Inc.)

FILE#	DN#	CK#	DN#	CK#
DISTRICT		FEDERAL AID PROJECT		
COUNTY		CONTROL	SECT	JOB
				HIGHWAY