

Zoom Map Page - Netscape

File Edit View Go Bookmarks Tools Window Help

http://tm100.irdinc.com/nci95nash/public/AnonMapPageZoom

Zoom Map Page

I-95 Traffic Speed

- Normal
- Congestion
- Stop and Go

Highway Indicators

- Construction Zone
- I-95 Highway

Alternate Routes

-

Icons

- Signs
- Cameras

Start | Explorin... | [Fwd: Ul... | Zoom ... | Microso... | NCDOT... | 9:43 AM

Zoom Map Page - Netscape

File Edit View Go Bookmarks Tools Window Help

Pop Up - Netscape

Current Message on Sign # 4 , Base = N

Last Updated: Thursday, May 29, 2003 at 9:44:23 AM
 Values shown in red are more than 15 minutes old.

Frame 1	Frame 2	Frame 3
13 MIN DELAY AHEAD	PREPARE TO STOP	

Close

©copyright 2002, 2003 IRD. All Rights Reserved.
[Return to NC DOT Homepage](#)

Icons

- Signs
- Cameras

Start | Explorin... | [Fwd: Ul... | Zoom | Zoom Map Page - Netscape | OT... | Pop U... | 9:44 AM

Zoom Map Page - Netscape

File Edit View Go Bookmarks Tools Window Help

Pop Up - Netscape

Current Message on Sign # 3 , Base = N

Last Updated: Wednesday, May 28, 2003 at 7:08:20 PM
 Values shown in red are more than 15 minutes old.

Frame 1 Frame 2 Frame 3

Close

©copyright 2002, 2003 IRD. All Rights Reserved.
[Return to NC DOT Homepage](#)

Icons

- Signs
- Cameras

Start | Explorin... | [Fwd: UI... | Zoom M... | Microso... | NCDOT... | Pop U... | 9:44 AM

Zoom Map Page - Netscape

File Edit View Go Bookmarks Tools Window Help

Pop Up - Netscape

Current Message on Sign # 2 , Base = N

Last Updated: Thursday, May 29, 2003 at 9:44:23 AM
 Values shown in red are more than 15 minutes old.

Frame 1 Frame 2 Frame 3

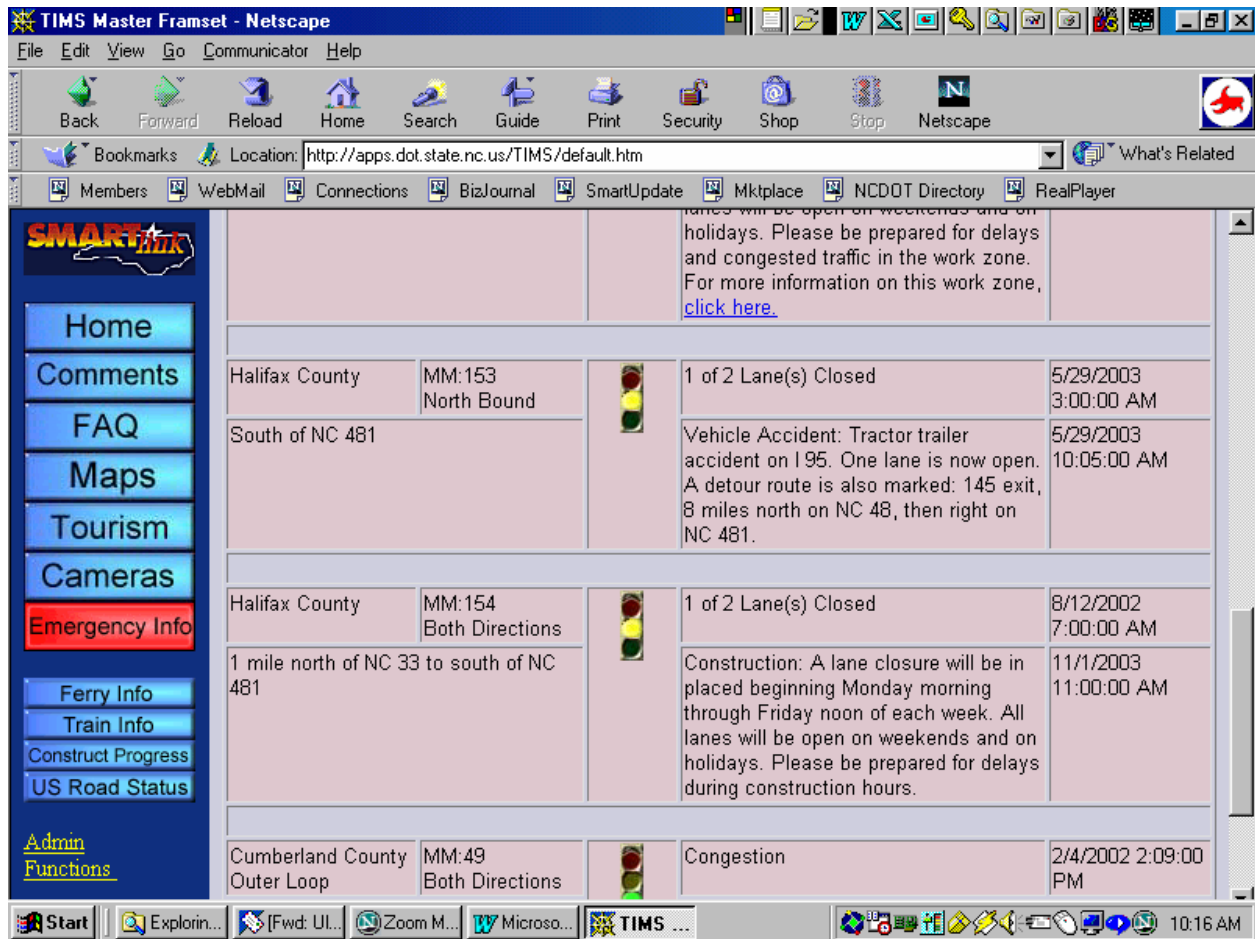
Close

©copyright 2002, 2003 IRD. All Rights Reserved.
[Return to NC DOT Homepage](#)

Icons

- Signs
- Cameras

Start | Explorin... | [Fwd: UI... | Zoom Map Page - Netscape | NCDOT... | Pop U... | 9:45 AM



The following accident occurred at 3am on 5/29/03 on the median side of northbound I95 at mm153. A tractor-trailer containing squash wrecked, breaking the cab in two and rupturing the saddle tanks (cleanup by P&F enviro). The accident occurred within the construction limits of a pavement rehab project that included a smartzone. Barnhill Contracting discovered the wreck at 5:30 am and was instructed by the wrecker company (Halifax Truck and Auto) that they would be through in about an hour. Barnhill removed a slab on the shoulder side approximately 1/2 to 3/4 miles south of the wreck.

At 7:30 am, Eddie Bunn's inspector saw the wreck and told Eddie, who then proceeded to put it into the TIMS system, which sent out a page at 8:38 am. At this point all northbound traffic was stopped.

At 9:04, the smartzone was posting 20 to 25 minute delays.

At 9:15, Brian Purvis contacted Tina Hinton with Halifax Emergency Management seeking assistance with clearing the wreck. He was instructed that their records showed that it was not a cleanup and that Hwy Patrol had jurisdiction.

At 10:15am the wreck was cleared and traffic was put back along its initial pattern from before the accident occurred.

The wrecker company delayed opening while trying to repair the axle of the trailer so they could pull it instead of loading it immediately and hauling it away. There was an interchange approximately 1 mile north of the accident.