



WATERSHED RESOURCES REGISTRY



Introductory Workshop, October 16th and 17th 2014

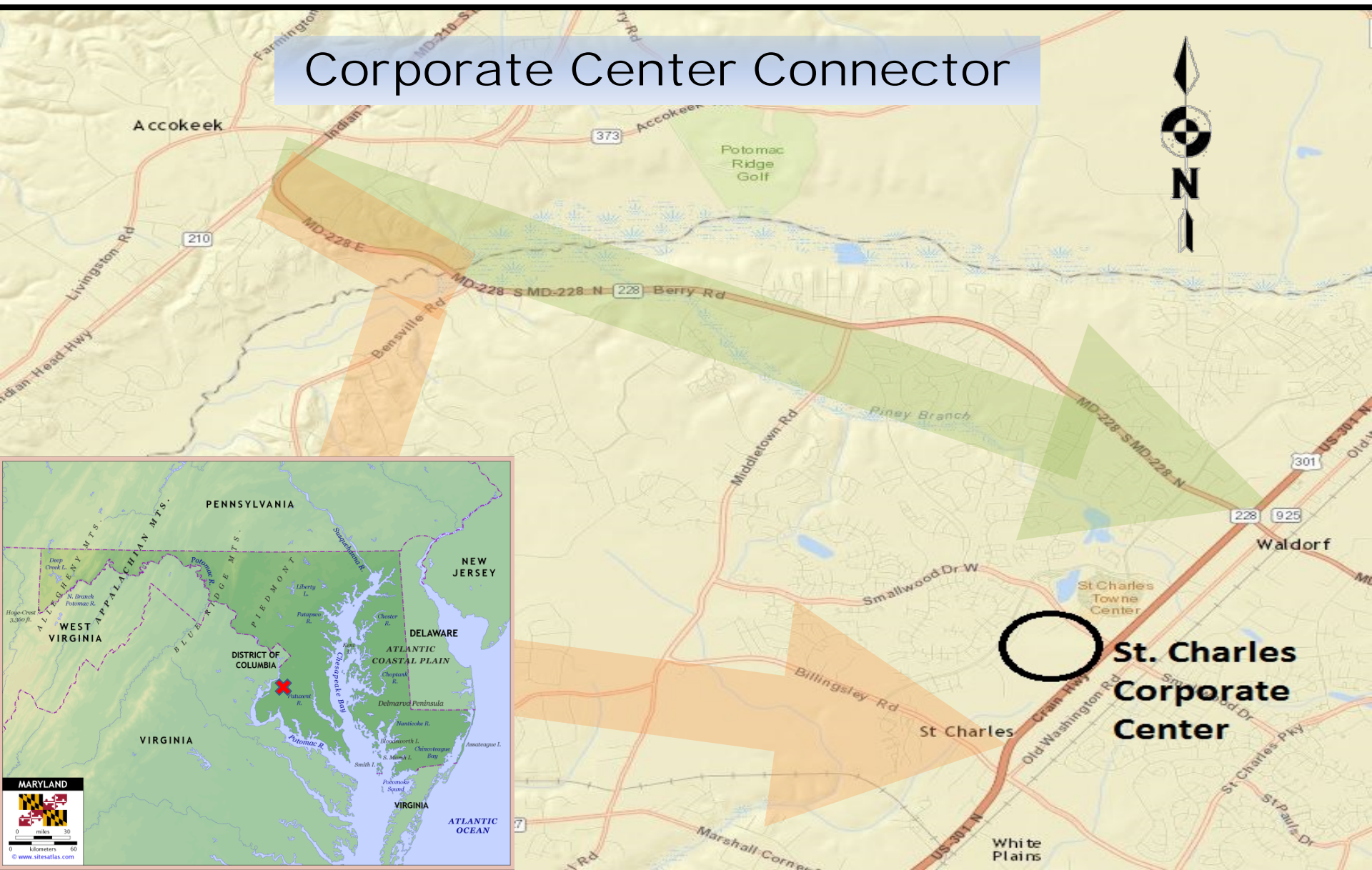
WRR Transportation Case Study

Donna Buscemi

MD State Highway Administration



Corporate Center Connector



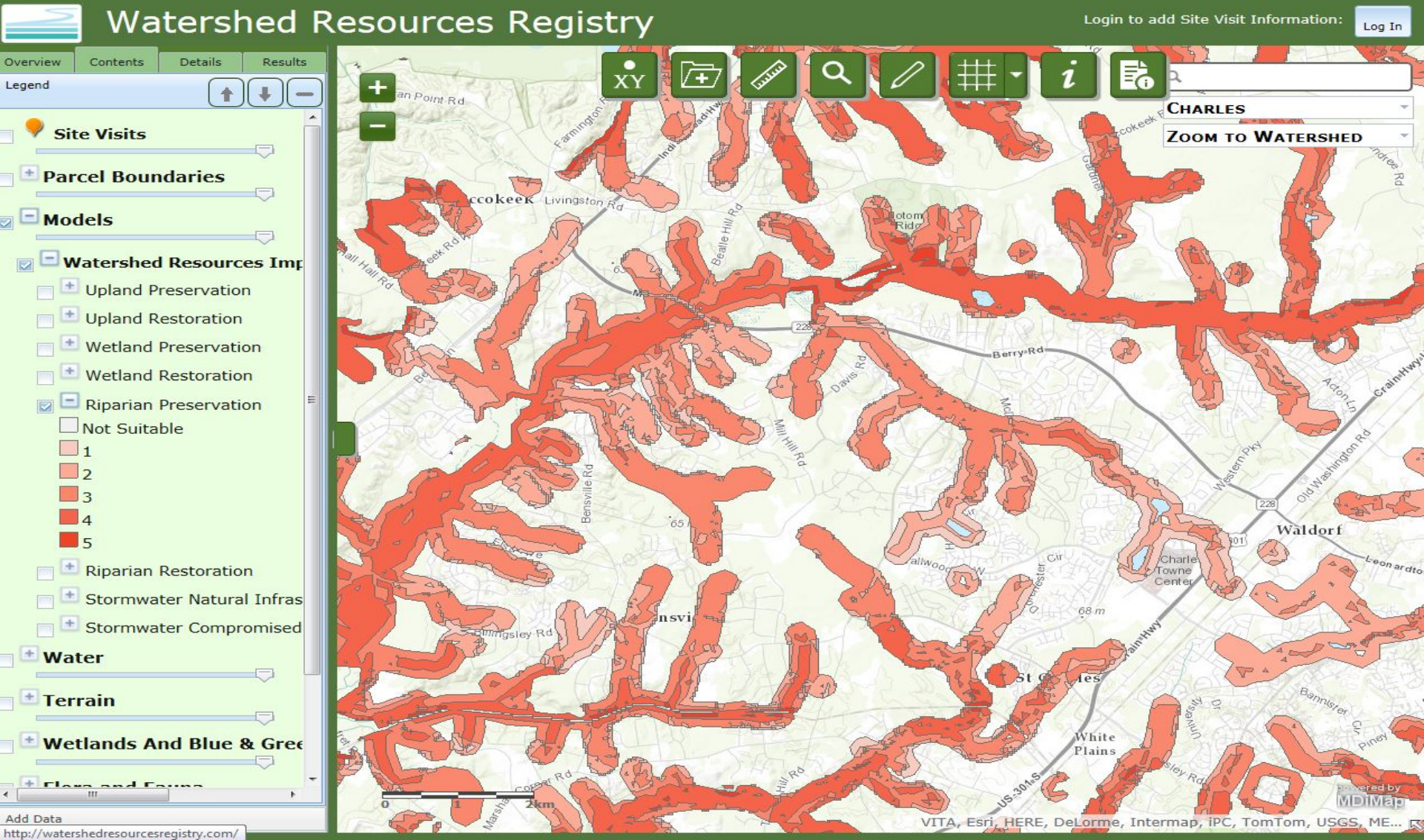
ENV INVENTORY AND ALTS DEVELOPMENT

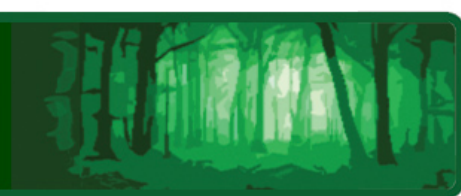




WATERSHED RESOURCES REGISTRY

ENV INVENTORY AND ALTS DEVELOPMENT





ENV INVENTORY AND ALTS DEVELOPMENT



Watershed Resources Registry

Login to add Site Visit Information:

Log In

Overview



Contents

Details

Results

Legend

☒ ☐ **Models**☒ ☐ **Watershed Resources Imp**

  Upland Preservation

☒ ☐ Upland Restoration

☐ Not Suitable

 Wetland Preservation

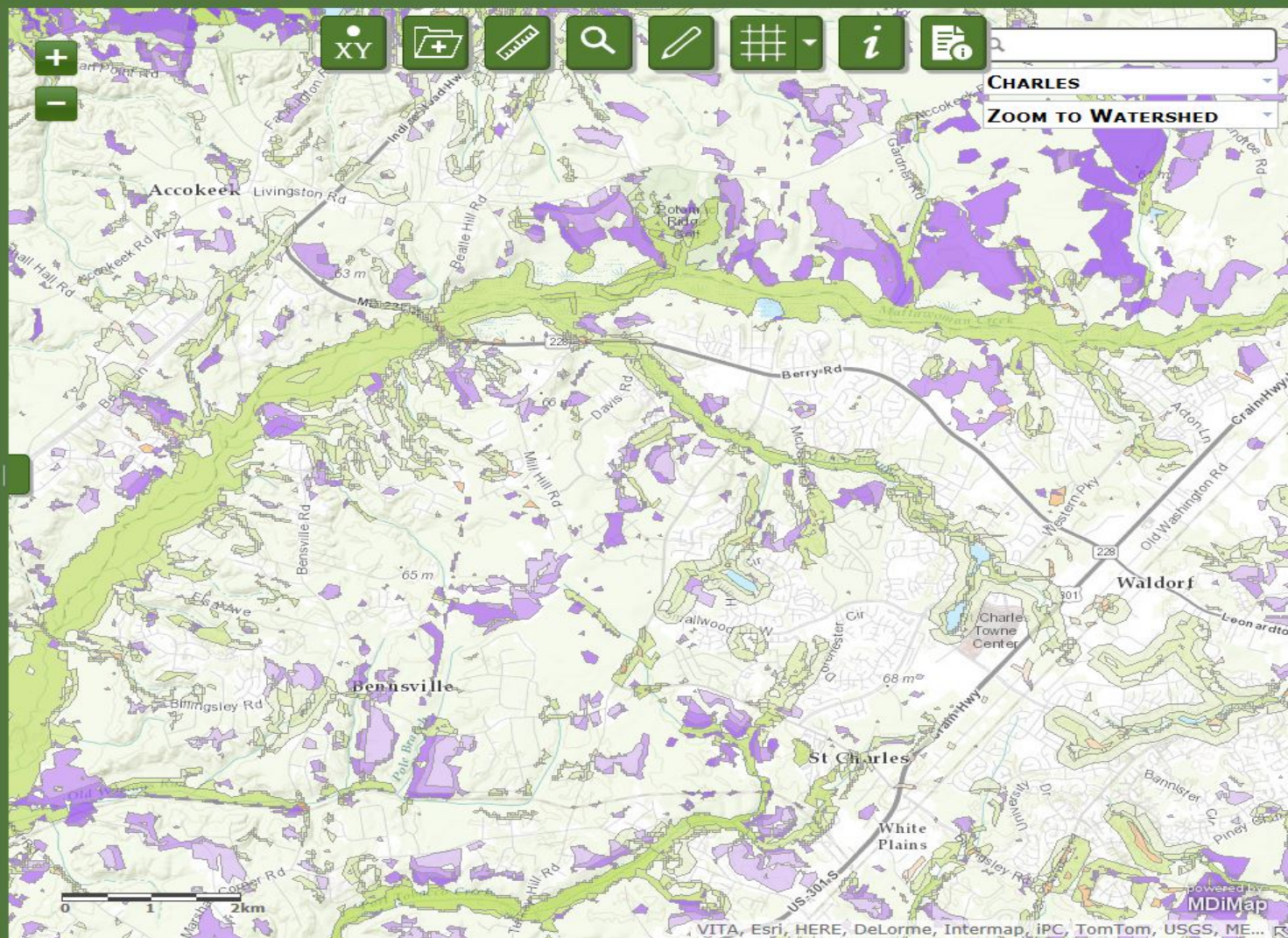
☒ ☐ Wetland Restoration☐ Not Suitable

 Riparian Preservation

☒ ☐ Riparian Restoration☐ Not Suitable

Stormwater Natural Infrast

Add Data



ENV INVENTORY AND ALTS DEVELOPMENT

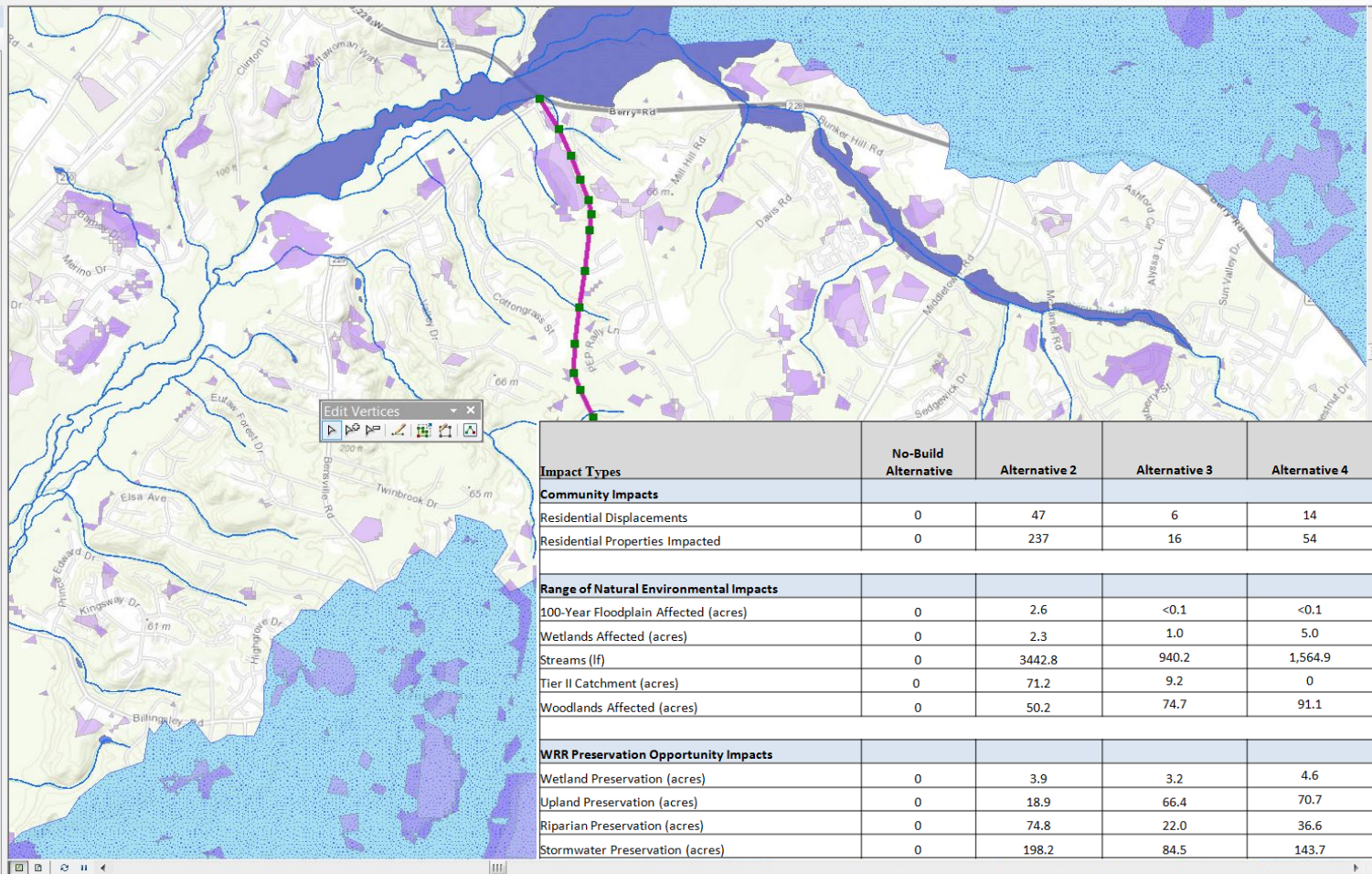
EditingWorking.mxd - ArcMap



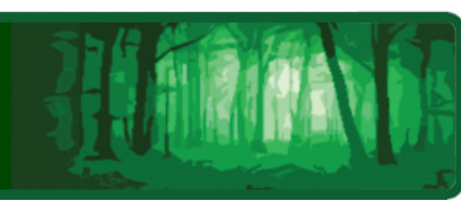
File Edit View Bookmarks Insert Selection Geoprocessing Customize Windows Help

Table Of Contents

- ☐ 3
- ☐ 4
- ☐ 5
- ☒ Upland Restoration
 - GRIDCODE
 - ☐ Not Suitable
 - ☐ 1
 - ☐ 2
 - ☐ 3
 - ☐ 4
 - ☐ 5
- ☐ Wetland Preservation
- ☐ Wetland Restoration
- ☐ Riparian Preservation
- ☐ Riparian Restoration
- ☐ Stormwater Natural Infrastructure Preserv
- ☐ Stormwater Compromised Infrastructure
- ☒ WRR/Water
 - ☒ Watershed Characteristics
 - ☐ Federal Hydrologic Unit Code (HUC) Wat
 - ☐ Maryland 12 Digit Watershed
 - ☐ Maryland 8 Digit Watershed
 - ☐ Stronghold Watershed
 - ☒ Tier II High Quality Stream Catchment
- ☒ Waters/Streams
 - ☒ Stream
 - ☐ Floodplain
 - ☒ Water Body
 - ☐ Water Quality Impairments
- ☐ WRR/SpeciesData
- ☐ WRR/Terrain
- ☒ WRR/WetlandandInfrastructure
 - ☒ Wetland
 - ☐ Green Infrastructure
 - ☐ Blue Infrastructure
- ☒ Basemap
 - ☒ World_Topo_Map



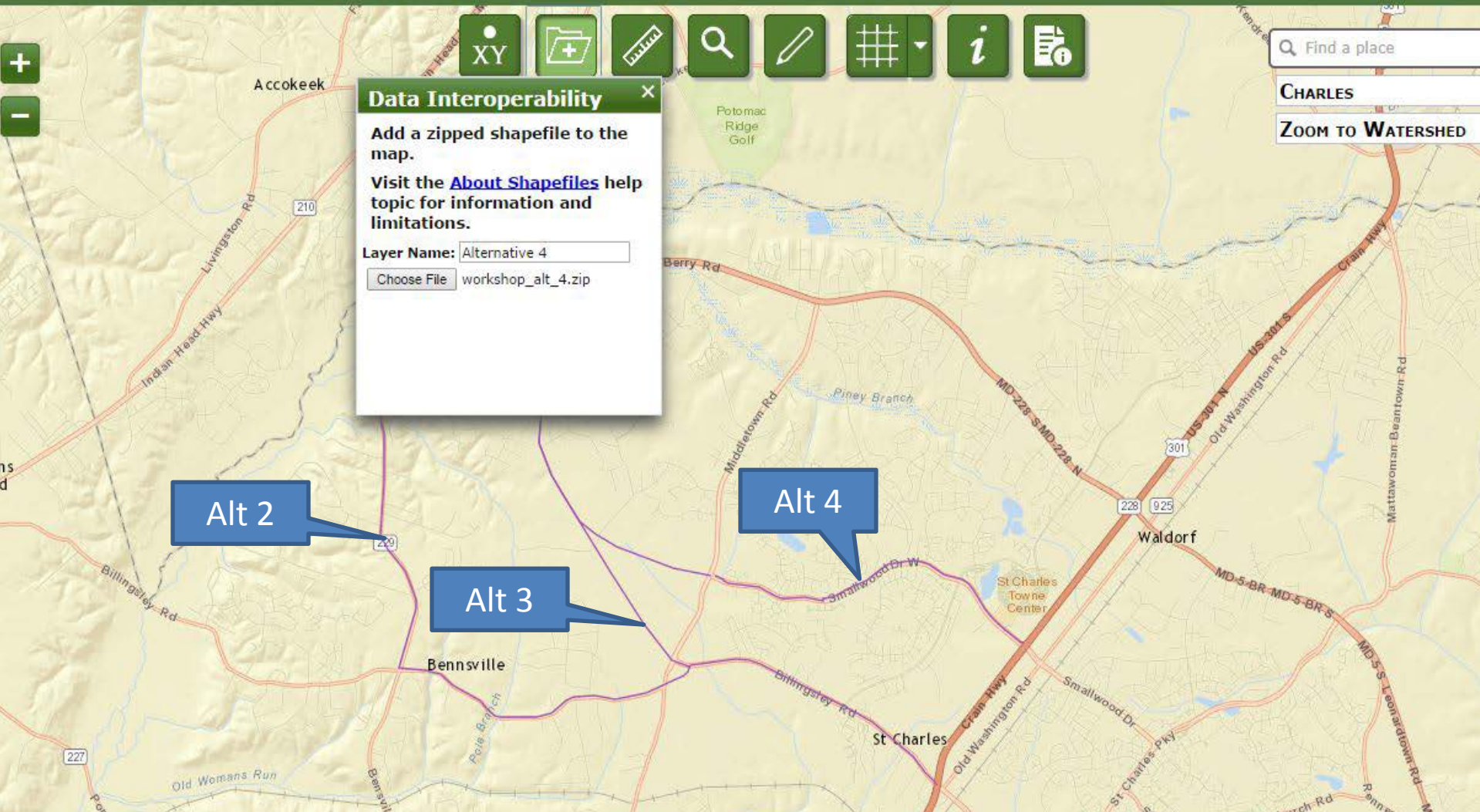
Impact Types	No-Build Alternative	Alternative 2	Alternative 3	Alternative 4
Community Impacts				
Residential Displacements	0	47	6	14
Residential Properties Impacted	0	237	16	54
Range of Natural Environmental Impacts				
100-Year Floodplain Affected (acres)	0	2.6	<0.1	<0.1
Wetlands Affected (acres)	0	2.3	1.0	5.0
Streams (lf)	0	3442.8	940.2	1,564.9
Tier II Catchment (acres)	0	71.2	9.2	0
Woodlands Affected (acres)	0	50.2	74.7	91.1
WRR Preservation Opportunity Impacts				
Wetland Preservation (acres)	0	3.9	3.2	4.6
Upland Preservation (acres)	0	18.9	66.4	70.7
Riparian Preservation (acres)	0	74.8	22.0	36.6
Stormwater Preservation (acres)	0	198.2	84.5	143.7

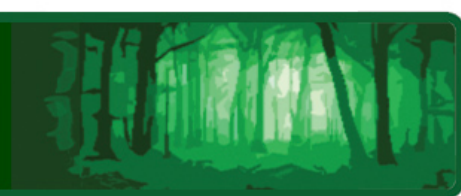


ALTS RETAINED FOR DETAILED STUDY

sources Registry

Login to add Site Visit Information:





PREFERRED ALTERNATIVE



Watershed Resources Registry

Overview	Contents	Details	Results
----------	----------	---------	---------

Legend

- ☐ Wetland Preservation
- ☐ Wetland Restoration
- ☐ Riparian Preservation
- ☐ Riparian Restoration
- ☐ Stormwater Natural Infrass
- ☐ Stormwater Compromised

☒ ☐ **Water**

☒ ☐ **Watershed Characteristics**  **Waters/Streams**



Water Quality Impairments

 Terrain

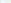
Wetlands and Blue & Green

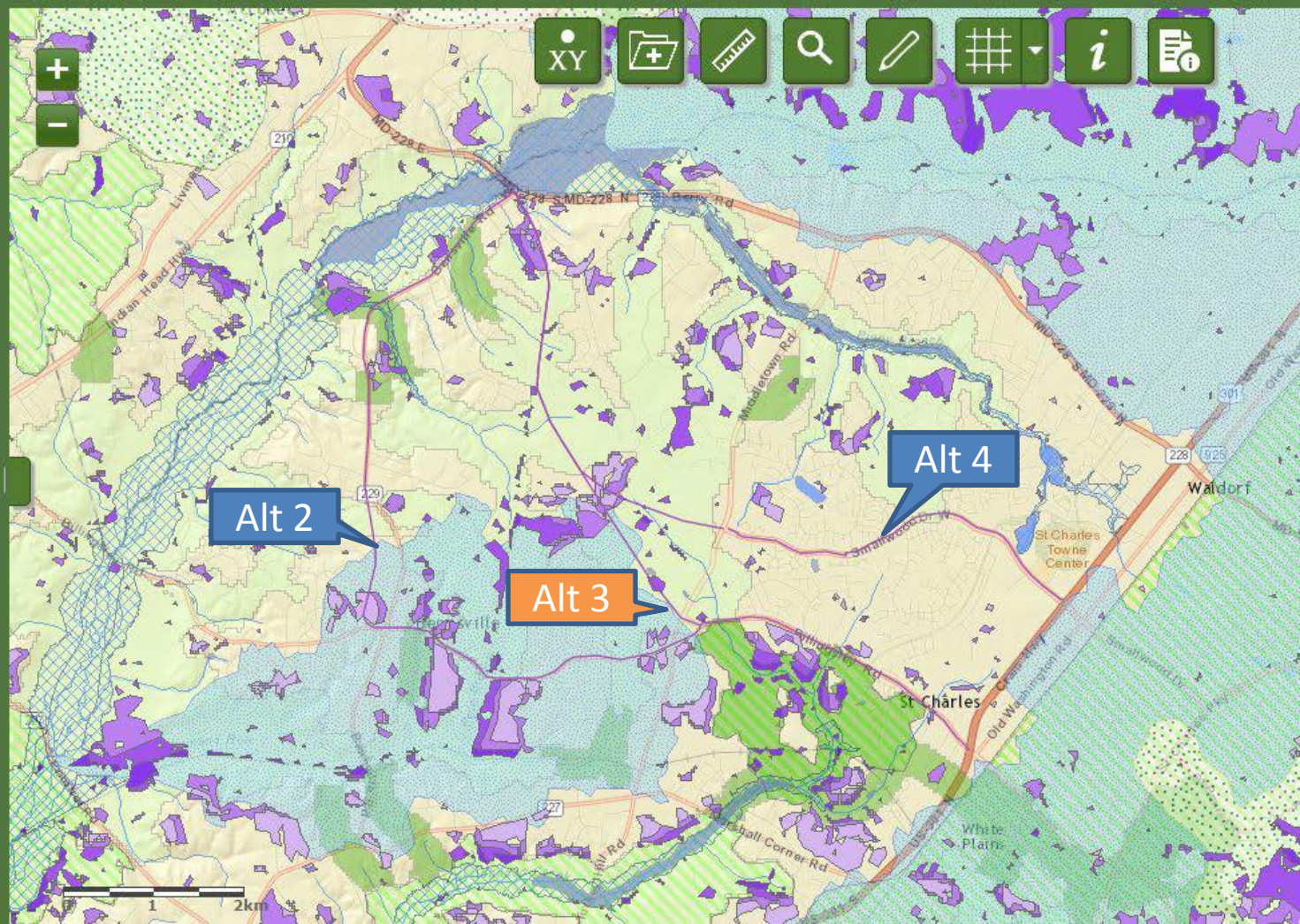
 Wetland

Green Infrastructure

  Corridor

Gap

 Blue Infrastructure





PREFERRED ALTERNATIVE

Impact Types	No-Build Alternative	Alternative 2	Alternative 3 (Preferred Alternative)	Alternative 4
Community Impacts				
Residential Displacements	0	47	6	14
Residential Properties Impacted	0	237	16	54
Range of Natural Environmental Impacts				
100-Year Floodplain Affected (acres)	0	2.6	<0.1	<0.1
Wetlands Affected (acres)	0	2.3	1.0	5.0
Streams (lf)	0	3442.8	940.2	1,564.9
Tier II Catchment (acres)	0	71.2	9.2	0
Woodlands Affected (acres)	0	50.2	74.7	91.1
WRR Preservation Opportunity Impacts				
Wetland Preservation (acres)	0	3.9	3.2	4.6
Upland Preservation (acres)	0	18.9	66.4	70.7
Riparian Preservation (acres)	0	74.8	22.0	36.6
Stormwater Preservation (acres)	0	198.2	84.5	143.7



Thank you!

Questions?