





Overall Project Strategy:

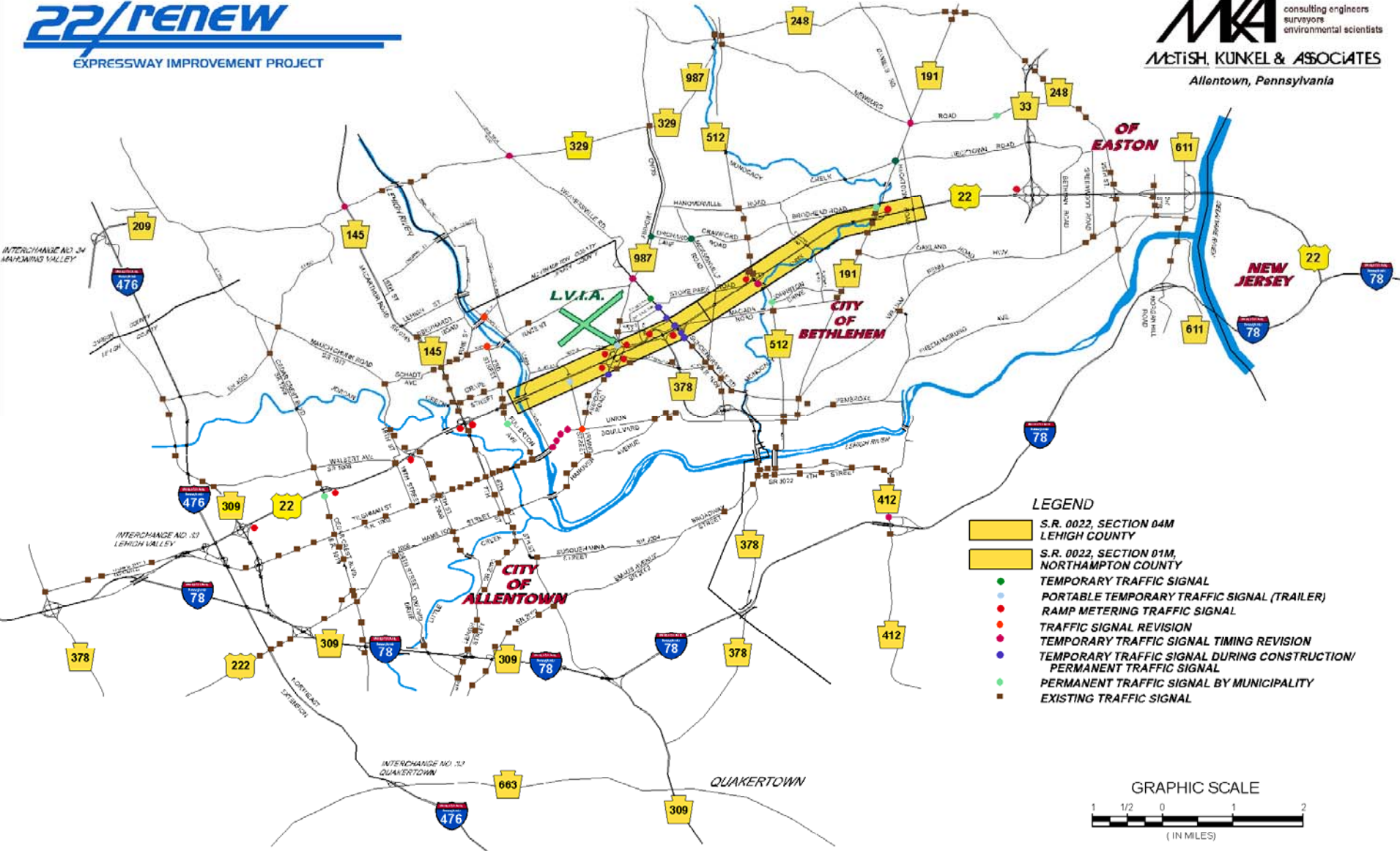
Divert traffic from Route 22 onto local street system.

➡ *Use ITS to keep drivers informed, encourage (& force) diversion, and facilitate incident management .*

I-78 Congestion/Delay Goals

1. Reduce traffic demand by 40%
2. Accelerated construction schedule
3. Maintain 4 lanes as much as possible
4. Surveillance and enforcement

5. Off-system improvements
6. “Real Time” motorists advisory system
7. Public information campaign



LEGEND

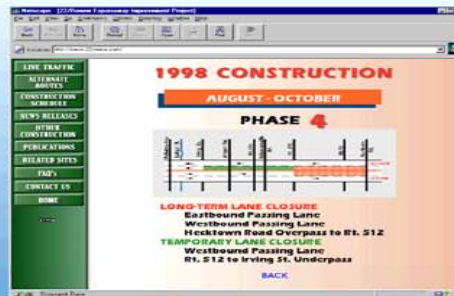
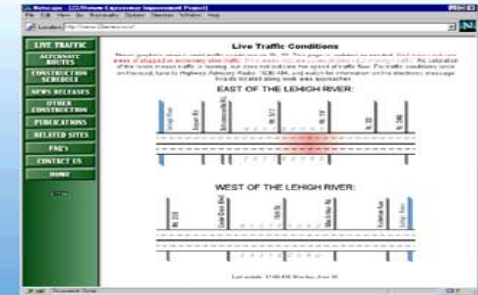
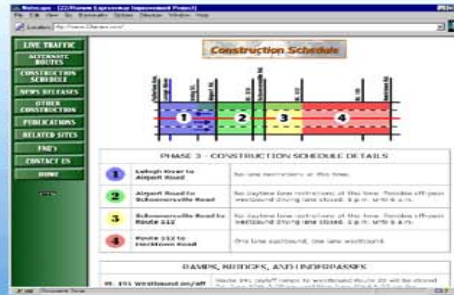
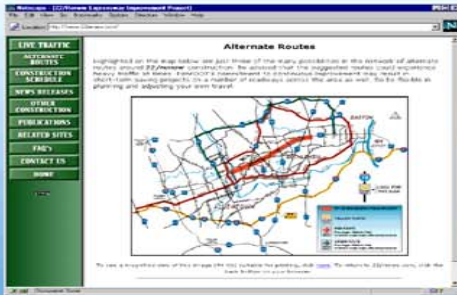
- S.R. 0022, SECTION 04M
LEHIGH COUNTY
- S.R. 0022, SECTION 01M,
NORTHAMPTON COUNTY
- TEMPORARY TRAFFIC SIGNAL
- PORTABLE TEMPORARY TRAFFIC SIGNAL (TRAILER)
- RAMP METERING TRAFFIC SIGNAL
- TRAFFIC SIGNAL REVISION
- TEMPORARY TRAFFIC SIGNAL TIMING REVISION
- TEMPORARY TRAFFIC SIGNAL DURING CONSTRUCTION/
PERMANENT TRAFFIC SIGNAL
- PERMANENT TRAFFIC SIGNAL BY MUNICIPALITY
- EXISTING TRAFFIC SIGNAL

GRAPHIC SCALE



22/RENEW

Website



Published by
Pennsylvania Department
Of Transportation
District 5-0



U.S. Department
Of Transportation
Federal Highway
Administration

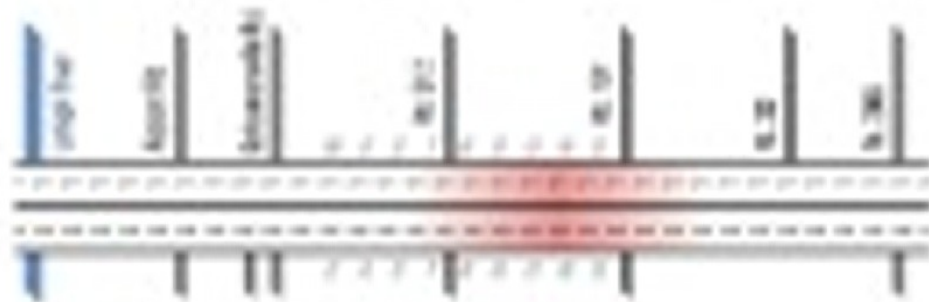
www.22renew.com

- LIVE TRAFFIC
- ADDITIONAL ROUTES
- CONSTRUCTION SCHEDULE
- NEWS RELEASES
- FIELD CONSTRUCTION
- PERMITS/STUDIES
- RELATED SITES
- FAQ'S
- CONTACT US
- HOME

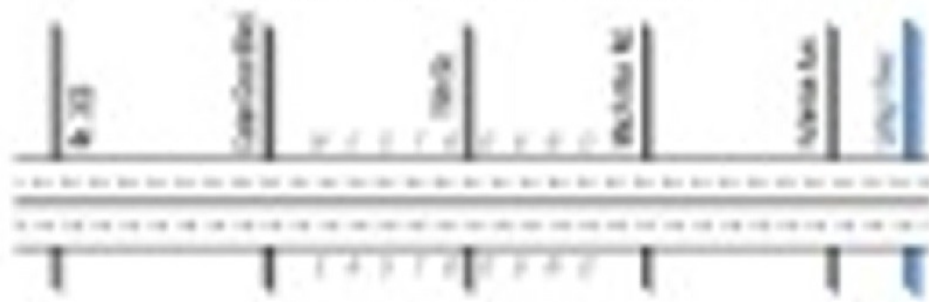
Live Traffic Conditions

These graphics show current traffic conditions on I-49. This page is updated as needed. **Red lines indicate areas of stopped or extremely slow traffic.** Blue waves indicate areas of slow or fast moving traffic. An overlay of the lanes means traffic is moving, but does not indicate the speed of traffic flow. For traffic conditions along portions of the route to Highway Authority Radio, 1-800-444, and visit for information on the electronic message boards located along work area approaches.

EAST OF THE LEHIGH RIVER:



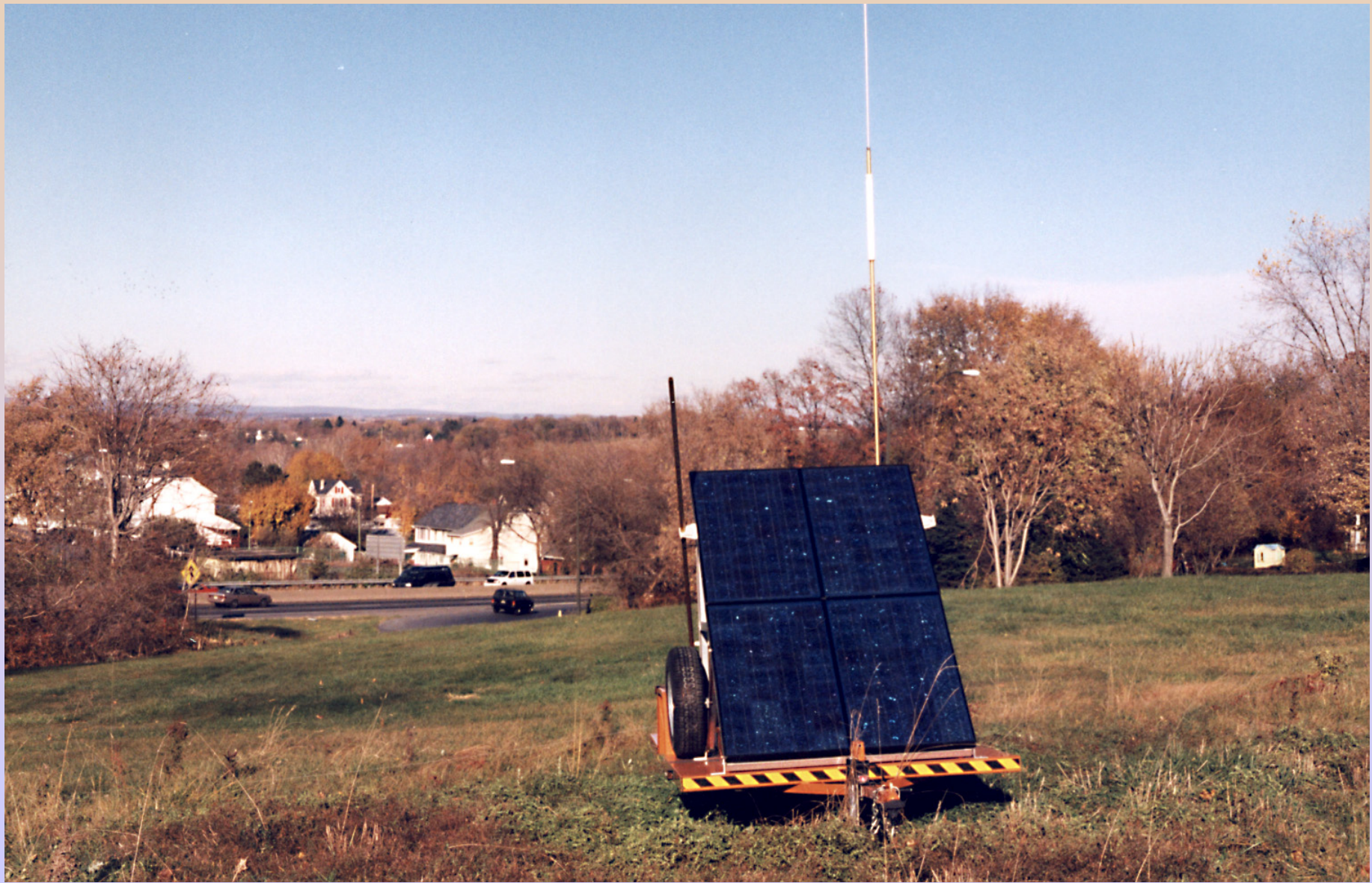
WEST OF THE LEHIGH RIVER:



Last updated: 4/20/07, Monday, 8:00 AM























STOP
HERE
ON
RED

ONE
VEHICLE
PER
GREEN

LEFT LANE
CLOSED
3 MILES

April 18 - May 10

FAHL











DO NOT USE
THIS TRAILER TO
HAUL LOADS EXCEEDING
1000 LBS

**SPEED
LIMIT**





SPEED
LIMIT

