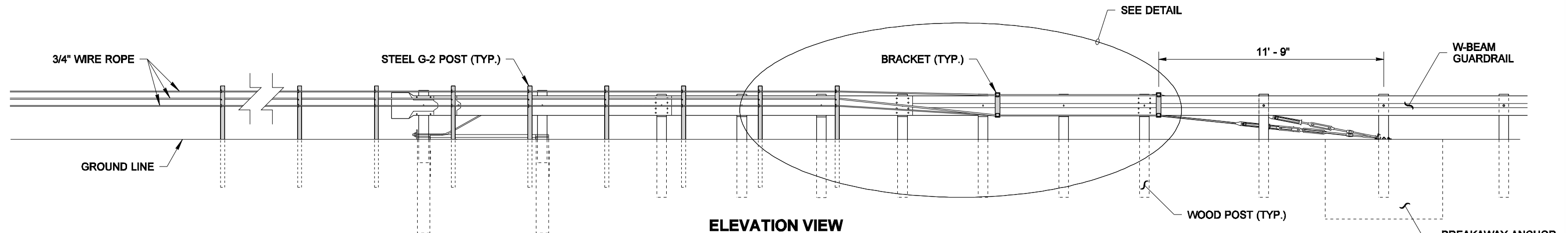
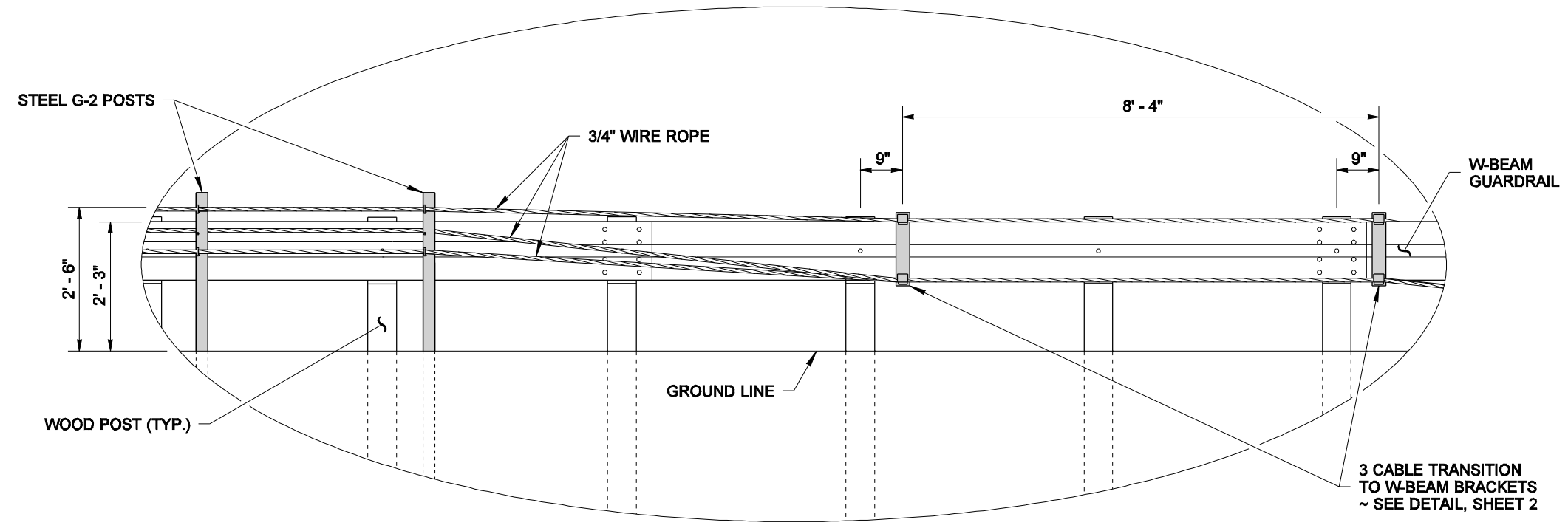


PLAN VIEW



ELEVATION VIEW



DETAIL

DRAWN BY: MONIQUE GLICK



EXPIRES JULY 24, 2006

**CABLE BARRIER TYPE 3
TRANSITION
TO W-BEAM GUARDRAIL
STANDARD PLAN C-3d**

SHEET 1 OF 2 SHEETS

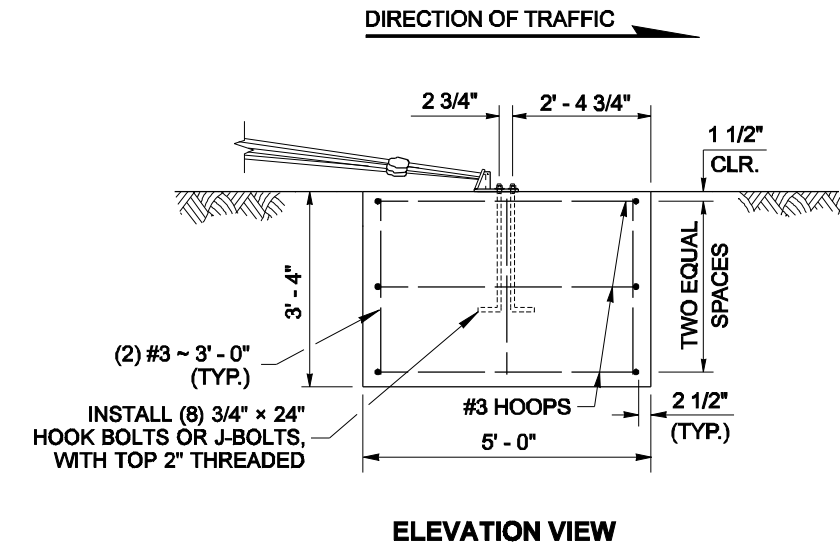
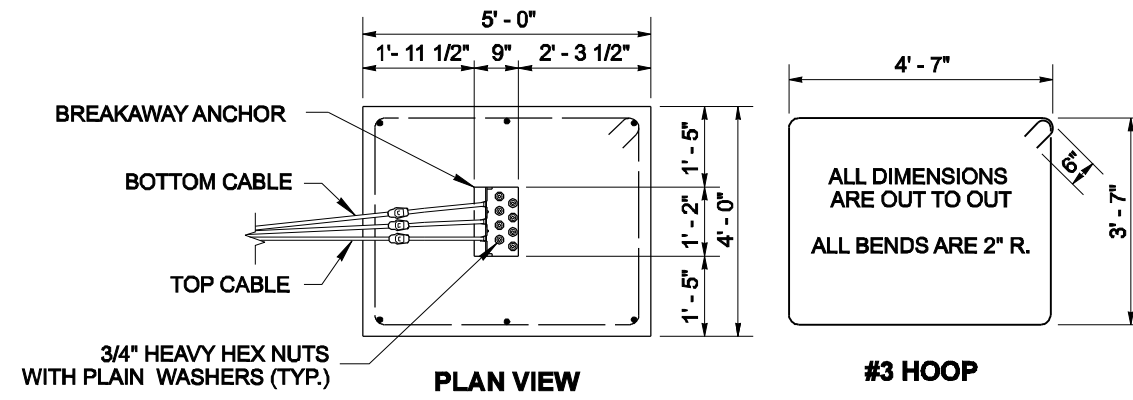
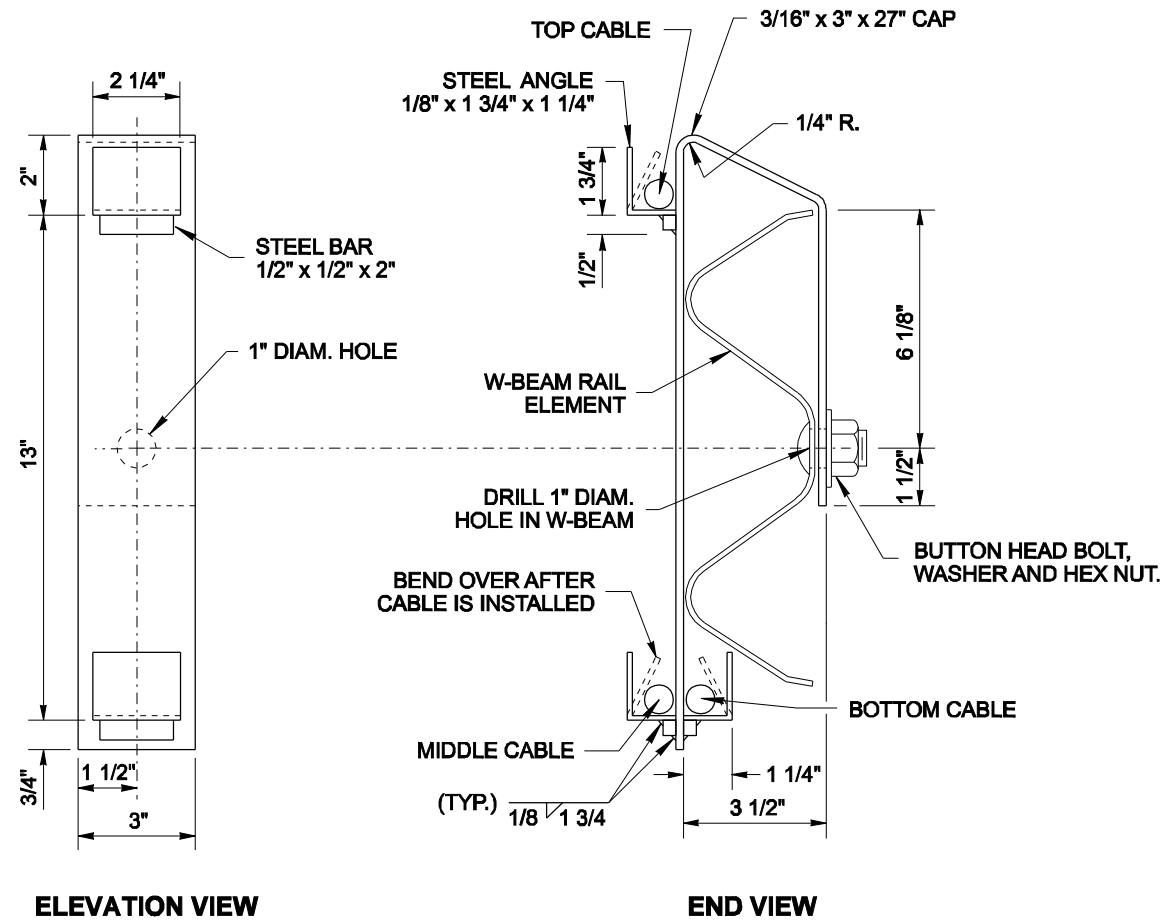
APPROVED FOR PUBLICATION

Harold J. Peterfeso 03-03-05
STATE DESIGN ENGINEER DATE

Washington State Department of Transportation

NOTE: THIS PLAN IS NOT A LEGAL ENGINEERING DOCUMENT BUT AN ELECTRONIC DUPLICATE. THE ORIGINAL, SIGNED BY THE ENGINEER AND APPROVED FOR PUBLICATION, IS KEPT ON FILE AT THE WASHINGTON STATE DEPARTMENT OF TRANSPORTATION. A COPY MAY BE OBTAINED UPON REQUEST.

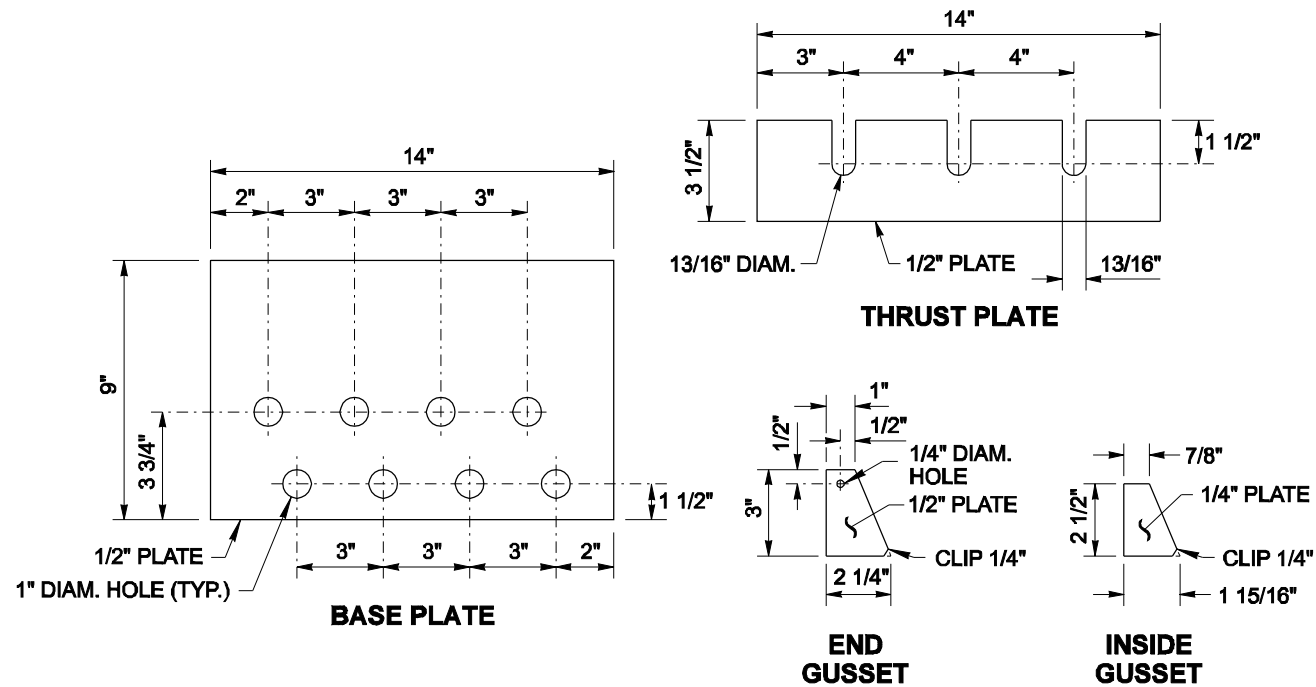
DRAWN BY: MONIQUE GLICK



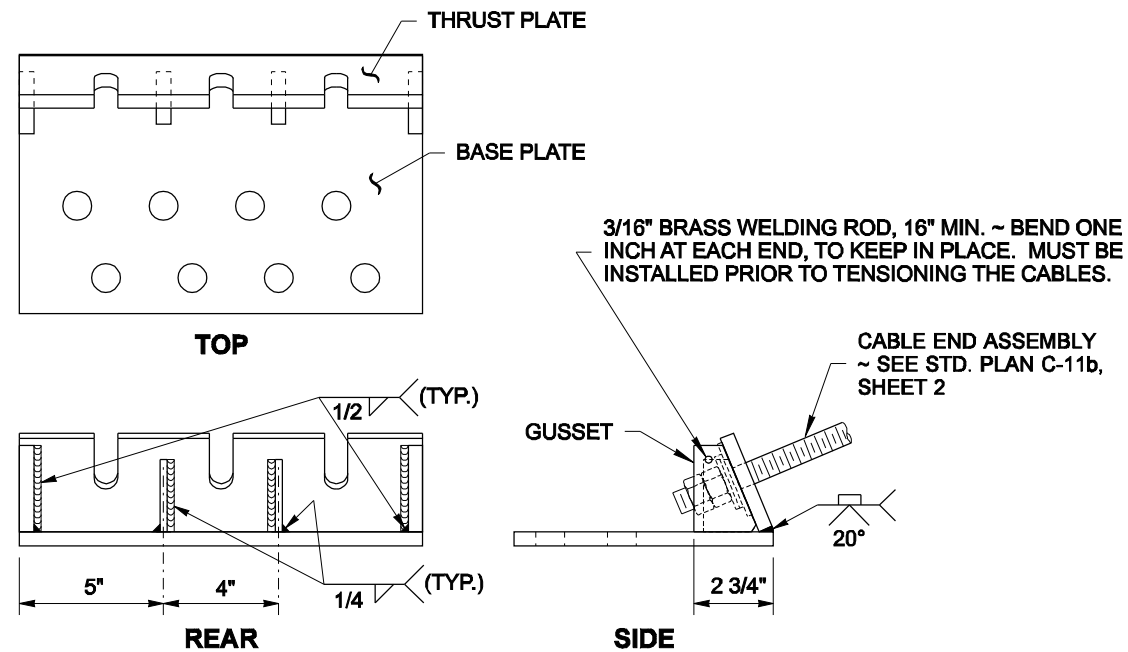
BREAKAWAY ANCHOR FOOTING DETAIL

STEEL USED IN THE FABRICATION OF THE BRACKET SHALL CONFORM TO ASTM A 36 AND THE BRACKET SHALL BE GALVANIZED AFTER FABRICATION IN ACCORDANCE WITH ASTM A 123.

3 CABLE TRANSITION TO W-BEAM BRACKET DETAIL



BREAKAWAY ANCHOR DETAIL



EXPIRES JULY 24, 2006

NOTE: THIS PLAN IS NOT A LEGAL ENGINEERING DOCUMENT UNLESS IT IS SIGNED BY THE ENGINEER AND APPROVED FOR PUBLICATION IS KEPT ON FILE AT THE WASHINGTON STATE DEPARTMENT OF TRANSPORTATION. A COPY MAY BE OBTAINED UPON REQUEST.

**CABLE BARRIER TYPE 3
TRANSITION
TO W-BEAM GUARDRAIL
STANDARD PLAN C-3d**

SHEET 2 OF 2 SHEETS

APPROVED FOR PUBLICATION

Harold J. Peterfeso 03-03-05
STATE DESIGN ENGINEER DATE

