



WATERSHED RESOURCES REGISTRY



Introductory Workshop, October 16th and 17th 2014

Creating Maryland's Watershed Resources Registry

Sandy Hertz
Maryland State Highway Administration



Presentation Focus

- What is the WRR?
- How'd We Get from There to Here?
 - Forming the TAC
 - Developing Our Goals
 - Data Validation and Field Testing
 - Outreach
- Next Steps

What is the WRR?

A comprehensive mapping tool and replicable framework that:

- Integrates and streamlines regulatory programs
- Promotes the watershed approach
- Guides resource planners
- Saves time and money, and increases program efficiencies
- Transparent, predictable and reliable
- Facilitates multi-agency input and coordination
- Utilizes both national and regional datasets



In the Beginning.....The WRR Origin

- A pilot Registry that grew out of the **Green Highways Partnership** and a project proposed by the Maryland State Highway Administration (MDSHA) for Route 301 in Prince George's and Charles Counties, Maryland.





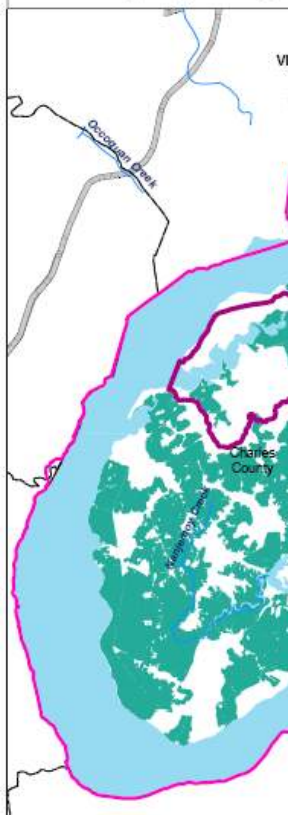
US 301 Watersheds





MAP III-A-5

US 301 CORE AQUATIC AREAS



MAP III-A-6

US 301 CORE STREAMS



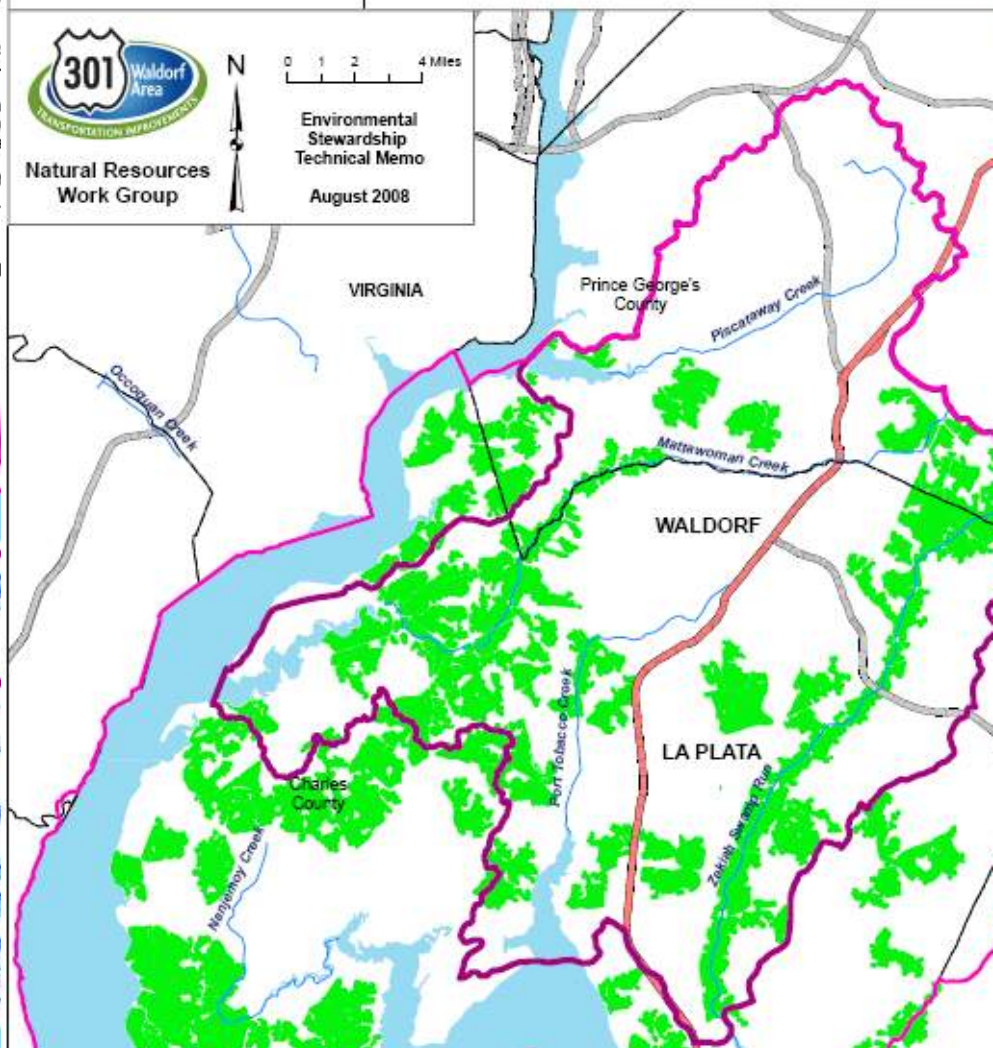
MAP III-A-4

US 301 CORE WETLANDS



MAP III-A-3

US 301 CORE FORESTS





April 10, 2008 - Compensatory Mitigation for Losses of Aquatic Resources; Final Rule

BREAKING NEWS

“Army Corps and EPA Improve Wetland and Stream Mitigation

WASHINGTON, DC – The U.S. Army Corps of Engineers and U.S. Environmental Protection Agency today released a new rule to clarify how to provide compensatory mitigation for unavoidable impacts to the nation’s wetlands and streams. The rule will enable the agencies to promote greater consistency, predictability and ecological success of mitigation projects under the Clean Water Act.”



A Pilot Study Begins

- Targeted Southwest Maryland
- Improve watershed planning and protect important environmental resources
- Help regulators and planners characterize and identify potential watershed needs
- Target suitable opportunity sites for protection and restoration of important resources



Initial Goals from 2008

- Address the challenges the new Federal Mitigation Rule present
- Data and resource integration among agencies
- Transparency
- Training and Outreach with Critical Stakeholders
- Ground Truthing of Sites
- Long Term Management Plan



Pulling Together a Team





Pulling Together a Team

- Determine Your Focus
- Determine your Core Group
- Include the “GEEK SQUAD”
- Gain Agency Commitments
- Establish Regular Meetings



Develop TAC Priorities

- Open Communication
- Establish High-Level Goals
- Identify the Data Needs
 - Determine Availability of Data
 - Data Gaps?



Develop Suitability Analyses

- Suitability Analyses
 - Determine Relevant Data
 - Discuss Watershed Need
 - Document and Track Key Decisions
- Develop Criteria
 - Proximity
 - Absence/presence



Data Validation and Field Testing

- Create a testing plan
- Document the Process
 - Desktop Review
 - Field Review
- Revisit the Data Inputs



It Can Make the Difference Between...





Publish the Results

- Make the data available
 - Privacy Issues
 - How Will It Be Used
 - Ease of Data Transfer
 - Currency

Outreach

- Agency Specific Trainings & Workshops
- Briefings
- Publications
- Presentations

Achieving Ecosystem Health Using a Watershed Approach

*The Watershed Resources Registry
Pilot Project in Southwestern Maryland*

*new joint effort in Maryland to improve watershed planning
s. The Watershed Resources Registry will help regulators and
characterize and identify potential watershed needs, as well as
nd restoration of important resources.*

HOFFMANN, AND WILLIAM SEIB



Watershed Resources Registry

PRESENTED BY
SANDY HERTZ, DEPUTY DIRECTOR
OFFICE OF ENVIRONMENTAL DESIGN





Develop a Long-Term Management Strategy

- Data updates
- Periodic Model Refinements
- Hosting Environment
- Software Updates
- Regulatory Influences





Initial Goals from 2008

- ✓ Address the challenges the new Federal Mitigation Rule present
- ✓ Data and resource integration among agencies
- ✓ Transparency
- ✓ Training and Outreach with Critical Stakeholders
- ✓ Ground Truthing of Sites
- ☐ Long Term Management Plan (In Process)



Exceeding Expectations

- Web Application
- Integration of Field Data Results
- 8 Model Outputs
- Continued Agency Coordination



Next Steps

- Development of a Stream Restoration Model
- Rollout of the WRR to other States
- Completion of the LTMS
- MOU or Signing Agreement Among Stakeholders