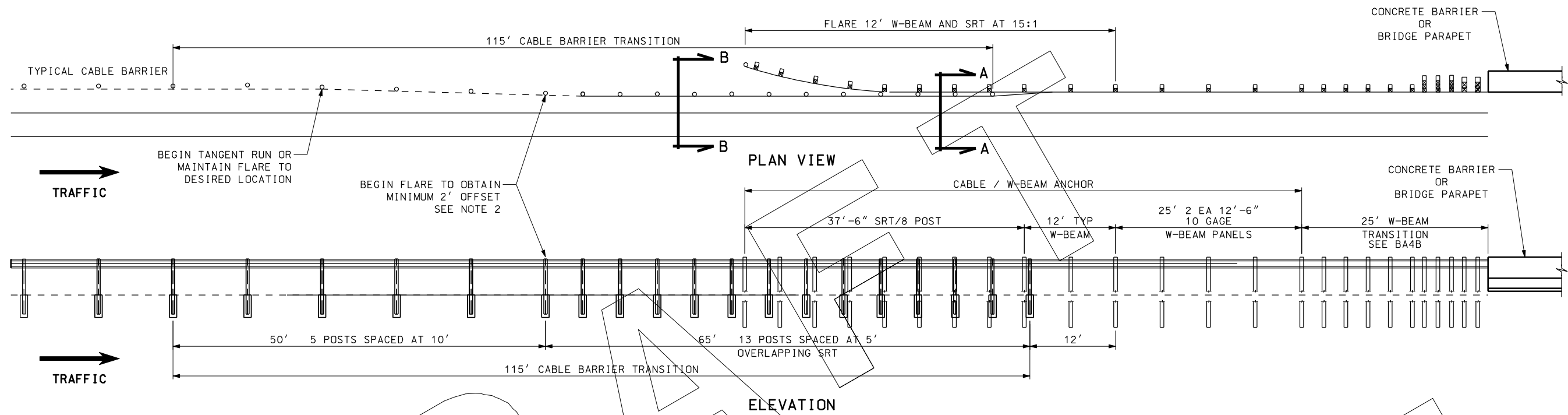
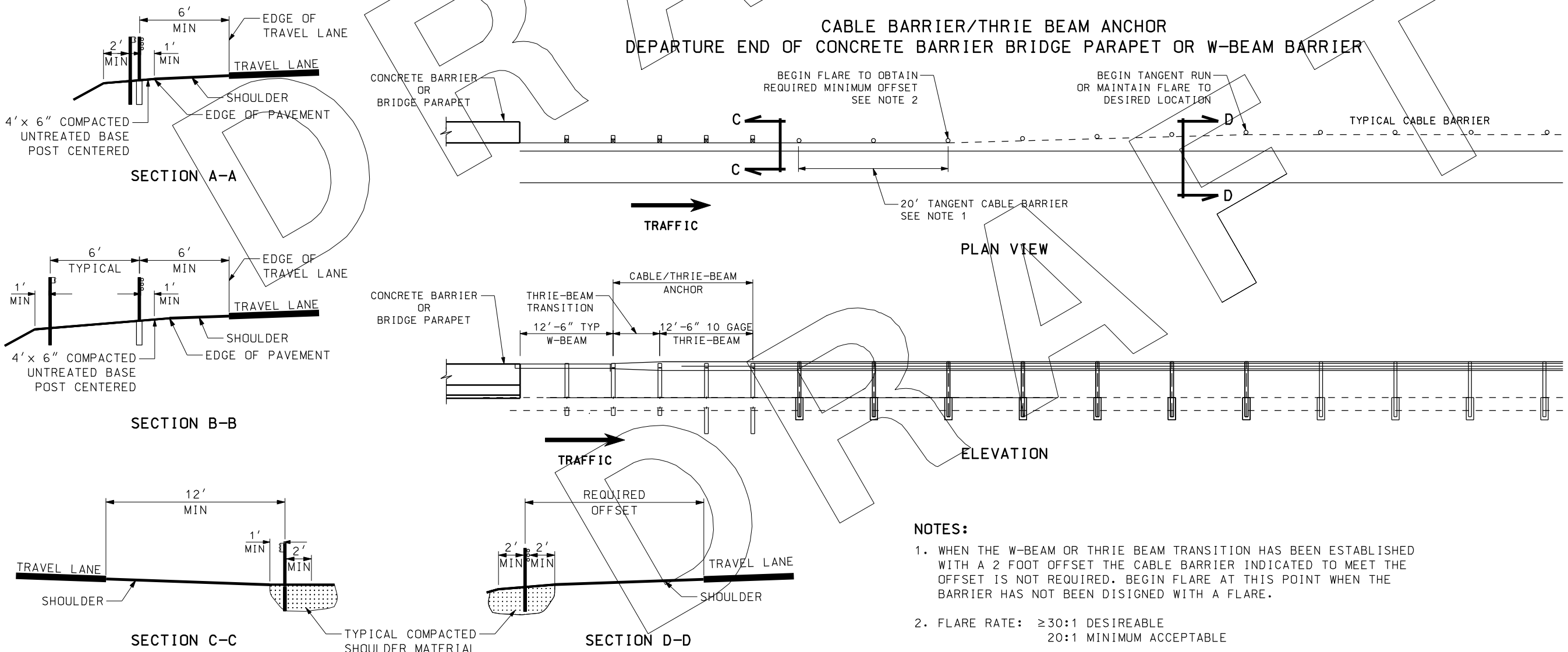


**CABLE BARRIER/W-BEAM ANCHOR
APPROACH TO CONCRETE BARRIER OR BRIDGE PARAPET**



**CABLE BARRIER/THRIE BEAM ANCHOR
DEPARTURE END OF CONCRETE BARRIER BRIDGE PARAPET OR W-BEAM BARRIER**



- NOTES:**
1. WHEN THE W-BEAM OR THRIE BEAM TRANSITION HAS BEEN ESTABLISHED WITH A 2 FOOT OFFSET THE CABLE BARRIER INDICATED TO MEET THE OFFSET IS NOT REQUIRED. BEGIN FLARE AT THIS POINT WHEN THE BARRIER HAS NOT BEEN DESIGNED WITH A FLARE.
 2. FLARE RATE: ≥30:1 DESIREABLE
20:1 MINIMUM ACCEPTABLE

NO.	DATE	APPR.	REMARKS

UTAH DEPARTMENT OF TRANSPORTATION
STANDARD DRAWINGS FOR ROAD AND BRIDGE CONSTRUCTION
SALT LAKE CITY, UTAH

RECOMMENDED FOR APPROVAL _____ DATE _____
CHAIRMAN STANDARDS COMMITTEE

APPROVED _____ DATE _____
DEPUTY DIRECTOR

CABLE BARRIER WITH GUARDRAIL TERMINALS

DETAIL SHEET

DETAIL SHEET
BA 5C

03-OCT-2005 DGN File N:\Projects\Conversion_Sof\Sheet\Files\Traffic\Safety\Glenn\July2005\BA05C.dgn