

# Cable Median Barriers in Texas







# Guidance

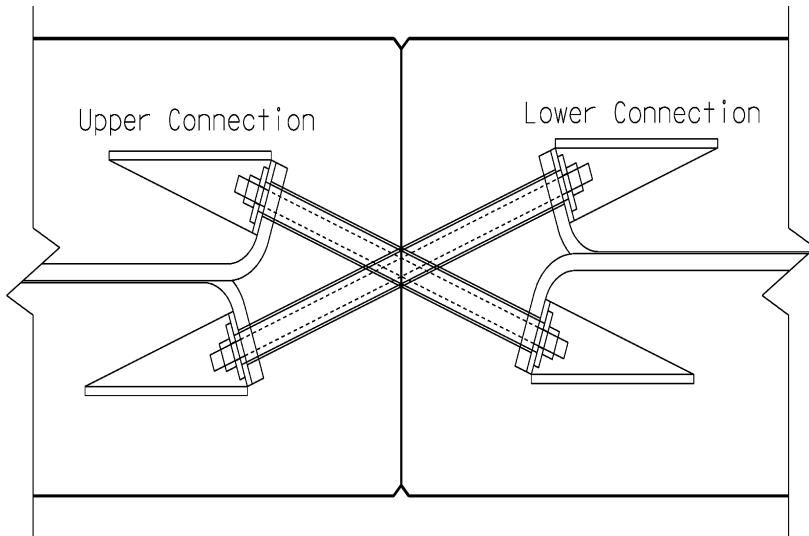
- Median Barrier
- Deflection Distance > 8 ft
- 6:1 Slope
- Both systems bid on construction projects  
(Exceptions must be approved by DES)
- Standard Details & Specifications available  
from DES-RDS



# Concrete Median Barriers



# Portable CTB X-Bolt Connection



Top view showing  
Joint Connection Type X



# Cable Barriers



# Trinity Cass – IH 10





# Trinity – IH 45



# Brifen – IH 635



# Brifen & Trinity Interstate



# Brifen & Trinity Interstate



# Safety Bond \$\$\$

- \$156.67 million - Cable Median Barrier
  - ~ 94 Projects
  - ~ 738 miles
- \$30.4 million – Both CTB & Cable Barrier
  - ~ 85 miles



# Prices

- Trinity & Brifen
  - \$12 / LF
  - \$4500 / end treatment
  
- Trinity, Brifen, SAFERoads & Gibraltar
  - \$9 / LF
  - \$2400 / end treatment



# Emergency Crossovers

- The local emergency services and law enforcement complained at first, but now we are getting positive feedback from them after they see how effective this system is in eliminating the crossover accidents.
- Utilizing the overpass locations to switch sides with the wire fence.
- Serves as a location where emergency vehicles can change direction since there is sufficient room between the columns and the wire fence.



# HITS

- There have been many hits since the cable barrier sections were placed. (The most amusing being a vehicle running from the police. This vehicle hit the barrier five times trying to get away. He didn't!)
- It is taking approximately 40 minutes to repair.
- ~ 10 posts per hit





# QUESTIONS??

## IDEAS???

