

PRECAST PANEL REPLACEMENT NOTES:

1. DO NOT LEAVE LESS THAN 12' OF ORIGINAL PAVEMENT IN PLACE BETWEEN PATCHES OR BETWEEN JOINTS.
2. FINE FILTER AGGREGATE WITH EXCEPTION OF:
 THE SURFACE TOLERANCE IS +/- 2.0mm
 AND
 THE CUSHION SAND SHALL BE CRUSHER RUN LIMESTONE (STONE DUST) MEETING THE FOLLOWING GRADATION. ALL MATERIALS FURNISHED SHALL BE WELL GRADED AND FREE FROM UNSUITABLE MATERIALS. ALL PROCESSING SHALL BE COMPLETED AT THE SOURCE. FINE FILTER AGGREGATE SHALL BE INCIDENTAL.

GRADATION:	
SIEVE SIZE DESIGNATION	PERCENT PASSING BY WEIGHT
1/2" MAX	100
NO. 4	80-100
NO. 10	55-75
NO. 40	10-40
NO. 200	0-20
3. JUST PRIOR TO PLACING SLABS DAMPEN THE SUBGRADE WITH WATER (AOBE) TO FACILITATE SUBSEQUENT BEDDING GROUT INSTALLATION.
4. IN MULTIPLE PRECAST PANEL INSTALLATIONS PLACE SLABS WITH MALE ENDS FIRST. ADJACENT SLABS WITH FEMALE ENDS ARE PLACED OVER THE MALE EDGES.
5. PLACE SPRAY FOAM GROUT DAMS AT THE TERMINUS OF ALL OPEN JOINTS PRIOR TO GROUTING.
6. INSTALL DOWEL GROUT MATERIAL IN THE BACK PORT OF EACH SLOT UNTIL THE GROUT LEVEL IN THE ADJACENT JOINT IS WITHIN 2" OF THE TOP OF THE SLAB. INSTALL DOWEL GROUT WITHIN 24 HOURS AFTER SLAB PLACEMENT IN STRICT ACCORDANCE WITH THE SPECIFICATION.
7. STARTING AT THE LOWEST PORT IN EACH SLAB PUMP BEDDING GROUT UNTIL IT COMES OUT THE CORRESPONDING PORT AT THE OTHER END OF THE SLAB. INSTALL BEDDING GROUT WITHIN 48 HOURS AFTER SLAB PLACEMENT IN STRICT ACCORDANCE WITH THE SPECIFICATION.
8. BOND BREAKER NOTES
 A) PRECAST PANELS NEXT TO EXISTING CONCRETE TO REMAIN:
 BOND BREAKER/RELEASE AGENT SHALL BE APPLIED TO VERTICAL SURFACE OF EXISTING PAVEMENT.
 B) PRECAST PANELS NEXT TO EXISTING CONCRETE TO BE REMOVED:
 BOND BREAKER/RELEASE AGENT SHALL BE APPLIED TO VERTICAL SURFACE OF PRECAST PANELS.
 C) PRECAST PANELS NEXT TO PRECAST PANELS:
 BOND BREAKER/RELEASE AGENT SHALL BE APPLIED TO VERTICAL SURFACE OF FIRST PANEL PLACED.
 D) PRECAST PANELS NEXT TO ASPHALT:
 BOND BREAKER/RELEASE AGENT IS NOT REQUIRED AT THIS LOCATION.
9. DOWEL LAYOUT VARIES PER EACH PANEL WIDTH. LAYOUT DOWELS FOR DRILLING ACCORDINGLY. DOWELS MUST BE WITHIN 1/4" OF PLAN LOCATION TO FIT INVERTED DOVETAIL SLOT (MOUSEHOLE) IN ADJACENT SLAB.

PRECAST CONCRETE PAVEMENT PANEL DETAILS

DRAWN BY: DJW

CHECKED BY: VAN

CERTIFIED BY _____

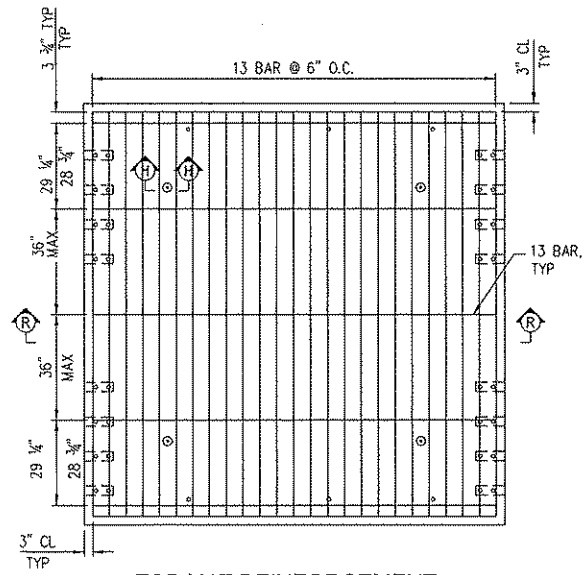
LICENSED PROFESSIONAL ENGINEER

LIC. NO. 41667 DATE _____

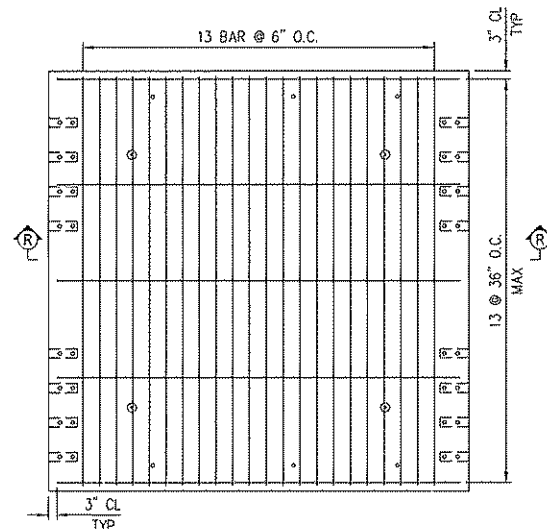
STATE PROJ. NO. 2775-12 (T.H. 62) SHEET NO. 21 OF 170 SHEETS

REINFORCEMENT SCHEDULE		
BAR MARK	QTY	LENGTH
13	47	11 1/2'
13	12	11 1/2'

TRIM AS REQ'D



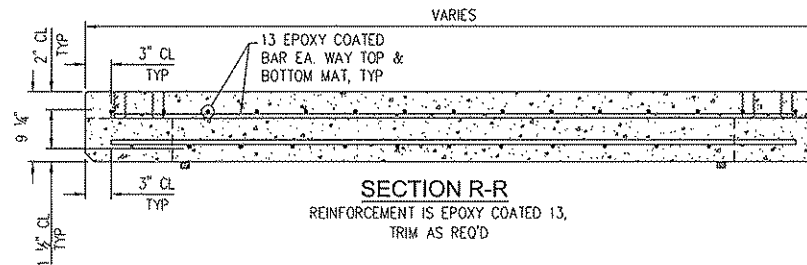
TOP MAT REINFORCEMENT



BOTTOM MAT REINFORCEMENT

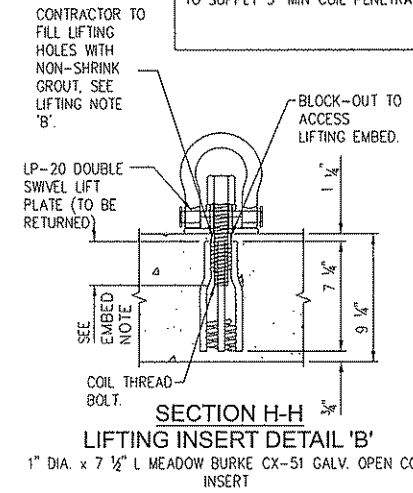
REINFORCEMENT SCHEDULE		
BAR MARK	QTY	LENGTH
13	47	11 1/2'
13	12	11 1/2'

TRIM AS REQ'D



SECTION R-R
 REINFORCEMENT IS EPOXY COATED 13,
 TRIM AS REQ'D

EMBED NOTE:
 1" DIA. COIL BOLT ONLY REQUIRES 2 1/2"
 MIN COIL PENETRATION, FORT MILLER
 TO SUPPLY 3" MIN COIL PENETRATION.



SECTION H-H
 LIFTING INSERT DETAIL 'B'
 1" DIA. x 7 1/2" L MEADOW BURKE CX-51 GALV. OPEN COIL
 INSERT

LIFTING NOTE 'B':
 BEFORE PATCHING CONTRACTOR TO CLEAN LIFTING
 HOLE OF ALL DEBRIS & ACCUMULATED WATER.
 LIFTING HOLE SHALL BE FILLED IN SUCH A
 MANNER AS NOT TO ALLOW AIR TO BECOME
 TRAPPED UNDER THE GROUT MATERIAL

BAR MARK No. LEGEND
 'E' - DENOTES EPOXY COATED REINFORCEMENT.
 FIRST TWO NUMERICAL DIGITS INDICATE BAR
 SIZE.

ALL REINFORCEMENT BARS SHALL
 BE EPOXY COATED STEEL

PRECAST CONCRETE PAVEMENT PANEL DETAILS

DRAWN BY: FM CHECKED BY: VAN CERTIFIED BY _____ LIC. NO. 41667 DATE _____

STATE PROJ. NO. 2775-12 (T.H. 62) SHEET NO. 23 OF 170 SHEETS